

Sizes with shaft diameter 40 at the shaft seal

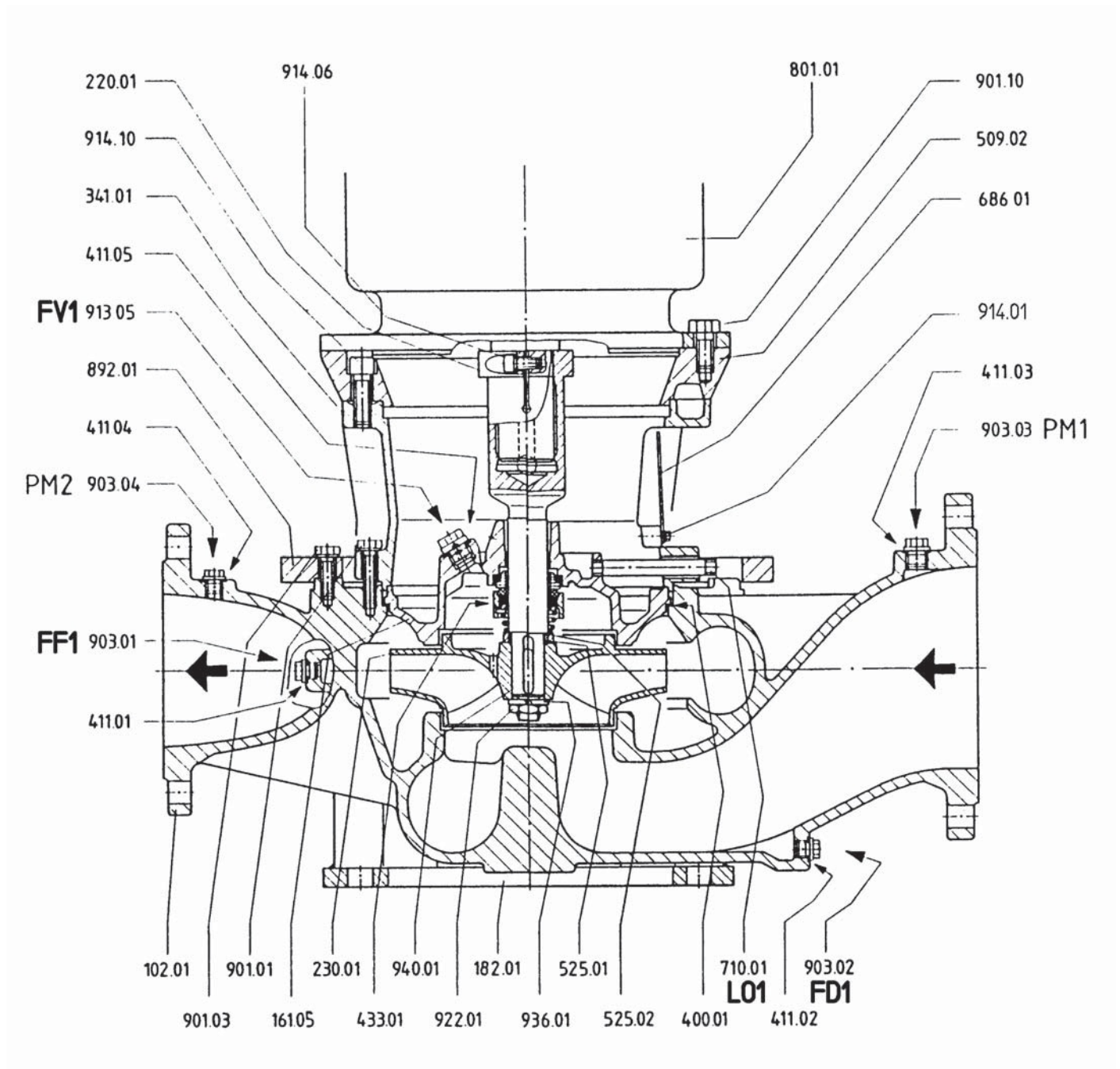


Fig. 10 U3...D - Unbalanced, uncooled mechanical seal

9 Appendix

9.1 Sectional drawing

9.1.1 Auxiliary connections

Abbreviation	Connection
FD1	Pumped medium / emptying
FF1	Filling
FV1	Vent
LO1	Leak / egress
PM1/PM2	Pressure gauge

Tab. 12 Abbreviations of the connection designations

9.1.2 Part numbers and designations

Part no.	Designation
102.01	Volute casing
108.01	Volute casing
161...	Housing cover
171.01	Guide wheel
182.01	Pump foot
220.01	Stub shaft
220.02	Stub shaft
230.01	Impeller
230.02	Impeller, first stage
230.03	Impeller, second stage
341.01	Motor bell housing
400.01	Gasket
400.02	Gasket
411.01	Seal ring
411.02	Seal ring
411.03	Seal ring
411.04	Seal ring
411.05	Seal ring
433...	Mechanical seal
502.01	Wear ring
502.02	Wear ring
509.01	Intermediate ring
509.02	Intermediate ring
514.01	Threaded ring
525.01	Spacer sleeve
525.02	Spacer sleeve

Part no.	Designation
565.01	Rivet
686.01	Safety guarding
686.02	Ring
710.01	Pipe
801.01	Flanged motor
892.01	Foot plate
901.01	Hexagon head bolt
901.02	Hexagon head bolt
901.03	Hexagon head bolt
901.04	Hexagon head bolt
901.10	Hexagon head bolt
902.01	Stud bolt
903.01	Screw plug
903.02	Screw plug
903.03	Screw plug
903.04	Screw plug
904.05	Grub screw
908.01	Jacking screw
913.05	Air release plug
914.01	Socket head cap screw assembly
914.06	Socket head cap screw
914.10	Socket head cap screw
920.01	Hexagon nut
920.04	Hexagon nut
922.01	Impeller nut
936.01	Spring ring
940.01	Shaft key
940.03	Shaft key
971.01	Name plate

Tab. 13 Designations of components according to part numbers